

## Medical Examination/Drug Fees

Since preventive medication using anti-HIV drugs after sexual exposure to HIV is not officially approved in Japan, medical examination and prescription fees **are not covered by health insurance. You must bear all fees for medical examinations, drugs, tests, and other services, too.** The fees are calculated based on the number of points for medical care covered by health insurance (one point = 10 yen).

However, the rules of our hospital stipulate that those who fall under **all of the following three items** should pay fees calculated, with one point for medical care covered by health insurance corresponding to 30 yen:

- 1) Those who have not Japanese health insurance
- 2) Foreign nationals
- 3) Those whose base of living is not in Japan

You are required to pay all medical examination and drug fees on the day of the medical examination. Although you may pay the fees by credit card, some pharmacies do not accept payment by credit card. For payment by credit card, please contact us in advance.

## Side Effects



It is sometimes reported that a few percent of people experience nausea and other digestive problems and that two to four percent of people experience insomnia, irritation, and dizziness, in which you feel like you are floating up and down or back and forth. If you have any symptoms to be worried about after taking the medication, please contact us.

Side effects occurring after PEP medication are not covered by the Relief System for Sufferers from Adverse Drug Reactions. Please note that medical examination and drug fees incurred by the onset of side effects should be paid at your own expense.



### Contact

#### AIDS Care Unit, Hiroshima University Hospital

1-2-3 Kasumi, Minami-ku, Hiroshima-shi,  
Hiroshima, Japan 734-8551

Tel: **+81-82-257-5351**

Tel: **082-257-5351**

### Office Hours

Weekdays: 8:30–16:00

(Service unavailable on Saturdays, Sundays,  
and holidays and during out-of-hours)

# PEP Guide

English





## PEP

PEP, an abbreviation for Post-Exposure Prophylaxis, is a prevention strategy for HIV infection. If you may have been exposed to HIV, you are required to take anti-HIV drugs used for HIV infection treatment within 72 hours of exposure. The medication should be taken once or twice a day for 30 days.



## Drugs

Two types of anti-HIV drugs that inhibit the replication of HIV viruses in the body are prescribed.

## Eligibility for PEP

Those who have sexual contact with a HIV-positive person or a person at risk of HIV infection without the use of a condom within the last 72 hours.



Those who are infected with HIV and who have sexual contact with a known HIV-negative person are not eligible for PEP.



## Flow of PEP treatment from the initial visit to the follow-up

1



### Procedures for medical examination

- Make an appointment for a visit to the AIDS Care Unit of Hiroshima University Hospital by phone in Japanese.
- After coming to the hospital, you are registered as a patient at the first visit counter at the central reception.
- Bring your Japanese health insurance card and something that certifies your place of residence.

Note: If you can't speak Japanese, please apply from the website of the Chugoku-Shikoku Regional AIDS Center.



For more information, please visit our website from this QR code.

2



### Interview and medical examination by a physician

- You receive an explanation on drugs, how to take the drugs, and their side effects.
- After receiving an explanation on fees regarding the use of drugs not covered by insurance, you are required to sign a letter of agreement.
- Basically, blood sampling is not performed. If you desire to undergo a blood test, you are required to pay the test fee separately.

3



### Issuance of prescriptions / Payment of medical examination fee

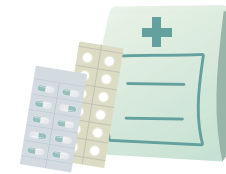
- You are given a prescription for 14 days of drugs at the initial visit.
- If any symptoms of side effects develop, contact the AIDS Care Unit of the hospital.
- Since any medical examination for side effects is not covered by insurance, you cannot use your health insurance.

4



### Purchase of drugs

- Take your prescription to an external pharmacy to purchase drugs.



5



### Follow-up

- You are required to receive a follow-up medical examination 14 days after taking anti-HIV drugs.
- If it is confirmed that you have not experienced any side effects, another 16 days of drugs are prescribed to you.



### Estimated fees [ for those in the category where one point for medical care covered by health insurance corresponds to 10 yen ]

Note: The estimated fees may differ from actual fees and are subject to change according to changes in points for medical care covered by health insurance.



Medical examination fee: approx. 3,500 yen+Tax

\* Fees for optional tests should be paid separately.



Drug fee(14days): approx. 100,000 yen+Tax



Medical examination fee: approx. 1,500 yen+Tax

\* Drug fee(16days): approx. 115,000 yen+Tax